

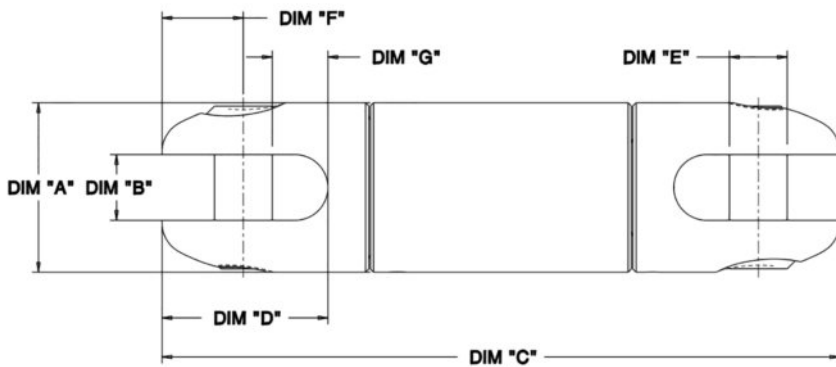
The MaxCell® Ball-Bearing Installation Swivels are designed specifically for underground cable pulling applications. Both models (MXCIK11 and MXCSW600) are precision machined from high-strength stainless steel for excellent durability and reusability.

- Reusable - one swivel for multiple installations\*
- Very little maintenance and tooling required for use
- Clevis pin is easily replaceable
- Corrosion resistant construction



Please note: Swivels are not designed to run around bullwheels.

\*It is recommended that the swivel be inspected before and after each cable pull.



Part Number	Load Capacity	A	B	C	D	E	F	G
MXCIK11	2500 lbs	.875"	.38"	4.4"	1.03"	.31"	.53"	.375"
MXCSW600	600 lbs	.625"	.28"	3.56"	.79"	.25"	.37"	.295"



MXCIK21  
2-Way Chain Harness

Swivels are not included with chain harness products.



MXCIK21CH  
3-Way Chain Harness

